

NOTICE

BASIC ASSESSMENT PROCESS FOR THE PROPOSED DMG LOGISTICS (PTY) LTD FILLING STATION ON ERF 16 IN OSIZWENI C, NEWCASTLE LOCAL MUNICIPALITY, KWAZULU NATAL PROVINCE

Notice is hereby given that **DMG Logistics (Pty) Ltd** is proposing to undertake the Basic Assessment process for the above-mentioned project in terms of:

- Chapter 5 of the National Environmental Management Act (NEMA), 1998 (Act No. 107 of 1998), as amended and the associated NEMA Environment Impact Assessment (EIA) Regulations, 2014, as amended.

DMG Logistics (Pty) Ltd has therefore appointed Pearl of Great Price Holdings (Pty) Ltd as independent Environmental Consultants, to undertake the Basic Assessment Process for the proposed project

Project Location.

The project on a site of 4599m² ERF 16 at Osizweni C approximately 23 km East of the town of Newcastle, under the due restriction of Newcastle local municipality, Amajuba District, KwaZulu-Natal (KZN).

Centre coordinates of the property are: Latitude:27°46'20.62"; Longitude:30°9'27.91"

Project Motivation

The proposed DMG Logistics Filling Station will not require any financial input from the Municipality, and it will be developed at no cost to the public. There will be a nett gain to the Municipality in that the development will provide employment opportunities to local residents, as well as income in the form of rates and taxes to the Municipality. In terms of the principle of employment generation and the objective of the government to meet the estimated growth rate in the economy and redress past imbalances, the proposed development will generate employment for people during the construction phase and operational phase.

ISAZISO

INQUBO YOKUHLOLA OKUYISEKELO YE- DMG LOGISTICS (PTY) LTD EHLONGOZWAYO YOKUGCWALISA YOKONGIWA KWEMVELO ISITSHI SOKUGCWALISA UGAZOLO KU-ERF 16 OSIZWENI C, KUMASIPALA WASE-NEWCASTLE, ESIFUNDAZWE SAKWAZULU NATAL.

Lesi saziso sidlulisela ukuthi i- **DMG Logistics (Pty) Ltd** ihlongoza ukwenza inqubo eyisisekelo yokuhlola Ejwayelekile Yokugunyazwa kwephrojekthi eshiwo ngenhla ngokwemigomo ye:

- ISahluko-5 soMthetho Kazwelonke Wokuphathwa Kwezemvelo (i-NEMA), ka-1998 (uMthetho No. 107 ka-1998), njengoba uchitshiyelwe kanye neMithethonqubo ye-NEMA Wokuhlola Ukuthinteka Kwemvelo (i-EIA), ka-2014, njengoba ichitshiyelwe.

Ngenxa yalokho, i- DMG Logistics iqoke i-Pearl of Great **Price Holdings (Pty) Ltd** njengabaXhumanisi Bemvelo abazimele, ukwenza Ukuhlolwa Okuyisisekelo kwiphrojekthi ehlongozwayo

Lapho Iphrojekthi Ezobakhona: Le phrojekthi ihlongozwa Lo msebenzi uhlongozwa kuWadi 8 kuMasipala Wasekhaya waseNewcastle futhi utholakala kuSiza 16 OSIZWENI C. Izixhumanisi ezimaphakathi zendawo yilezi: Latitude:27°46'20.62"; Longitude:30°9'27.91"

Okugququzela Le Phrojekthi: Lesi sitheshi esihlongozwayo sokugcwalisa UGAZOLO i- DMG Logistics Filling Station ngeke sidinge noma iyiphi imali evela kuMasipala, futhi sizothuthukiswa ngaphandle kwenkokhiso emphakathini. Kuzoba nenzuzo enkulu kuMasipala ngokuthi le ntuthuko izohlizeka ngamathuba emisebenzi kubahlali bendawo, kanye nemali etholwa ngama-rates nezintela kuMasipala. Ngokomgomo wokukhiqiza ukuqashwa kanye nenjongo kahulumeni yokuhlangabezana nesilinganiso sokukhula komnotho kanye nokulungisa ukungalingani okudlule, intuthuko ehlongozwayo izodala amathuba omsebenzi kubantu ngesikhathi sesigaba sokwakha kanye nesigaba sokusebenza.

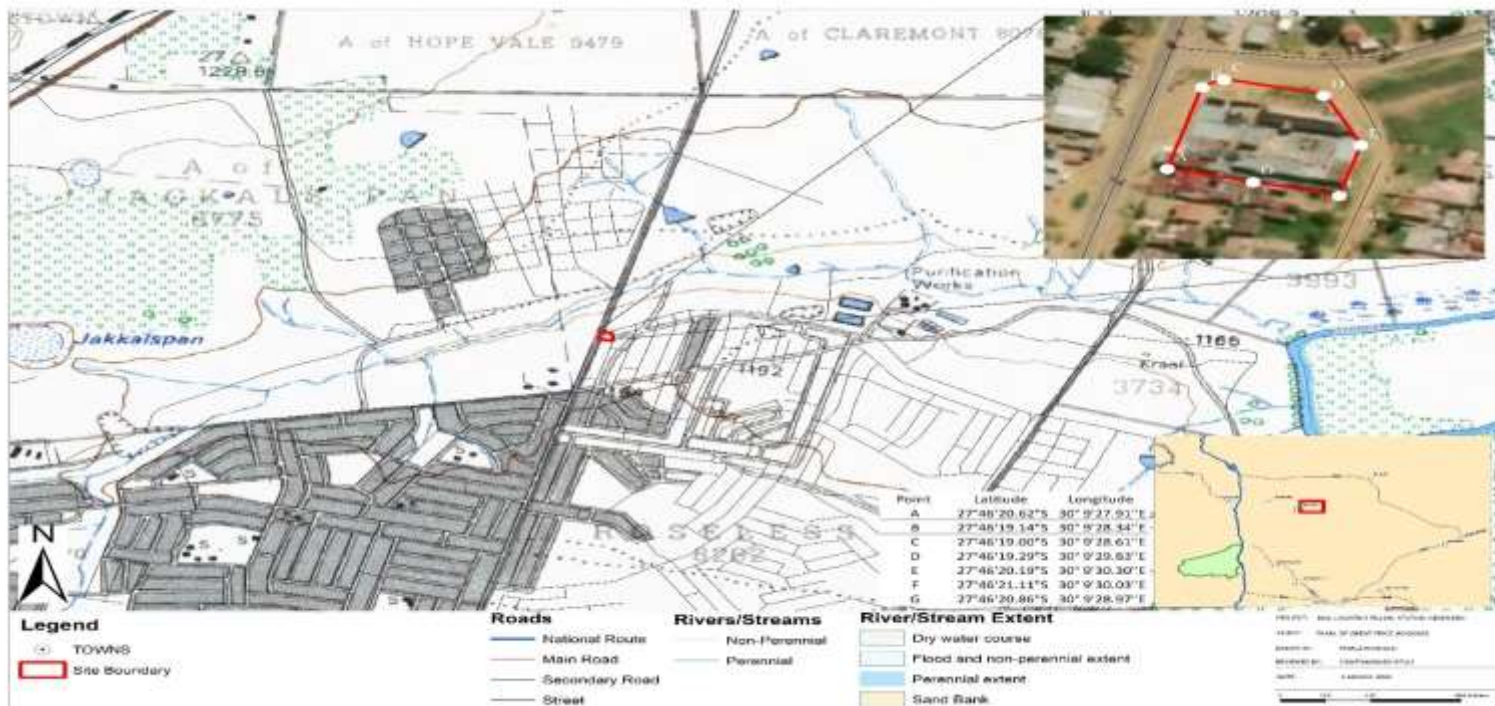


Figure 1: Aerial image showing proposed DMG Logistics Filling Station

Should you wish to register as an Interested and Affected Party on the project or to make suggestions and/or comments on this proposal, kindly provide these together with your name, contact details (preferred method of communication, e.g. e-mail or cellphone) and an indication of any interest which you (or the organisation you represent) have in the application to Khululiwe Mathenjwa or Zamaswazi Khulu on **Cell: +27 72 289 5734/ +27 73 2747370; e-mail: info@pogpohs.co.za, mathenjwakhululiwe@gmail.com** Website: www.pogpohs.co.za

Uma kwenzeka unesifiso sokubhalisa njengenhlango enothando nethintekayo kule phrojekthi noma ukwenza iziphakamiso kanye nemibono kulokho okuhlongozwayo, sicela ngomusa ukunikeze kanye negama lakho, iminingwane yakho yokuxhumana (indlela etusekayo yokuxhumana, isb. i-email neselula) kanye nokukhombisa noma iyiphi intshisekelo wena (noma inhlangano oyimele) onayo esicelweni, kuthumele kuKhululiwe Mathenjwa noma uZamaswazi Khulu; Iselula: +27 72 289 5734/ +27 73 274 7370; website: www.pogpohs.co.za; imeyili: info@pogpohs.co.za, mathenjwakhululiwe@gmail.com, zamaswazikhulu@gmail.com

