



PEARL OF GREAT PRICE

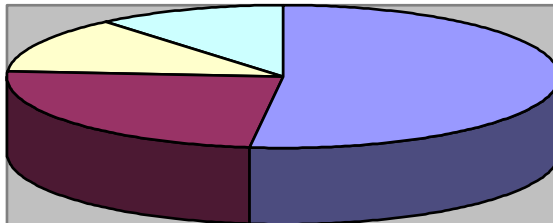
Environmental Consulting

1. EXECUTIVE SUMMARY

PEARL OF GREAT PRICE ENVIRONMENTAL CONSULTING is a division of **PEARL OF GREAT PRICE HOLDINGS PTY (LTD)** and was established in January 2018. It is based in Newcastle, 100% black female owned and level 1 BBBEE contributor currently focusing at empowering the historically disadvantaged individuals and seeks to take advantage of the opportunities in the Environmental consultation, Occupational Health and safety and Water and Waste Management services that are affordable so that the youth, female and previously disadvantaged can be able to access financial freedom through compliance with all environmental legislation.

The Pearl of Great Price company industry is classified as follows:

- Professional Environmental Scientific Services holding 52%
- Occupational Health and Safety services holding 24%
- Ware housing and support activities holding 13%
- Remediation activities and other waste management services holding 11%



2. COMPANY POLICY

- To undertake projects in accordance with defined scope of work, agreed between the company and its clients;
- To ensure that technical work is performed in accordance with relevant published standards, codes of practice, specifications, recognized professional guidance, statutory documents and other considerations;
- To complete technical work within an agreed time frame and financial budgets;
- To carry out activities in accordance with relevant legislation requirements;
- To review and update technical skills and management practices to continually improve service to clients;
- To make sure our clients are in full compliance with environmental legislation, occupational health and safety and other relevant legislation.
- To apply on behalf of our clients for environmental authorizations;
- To give technical guidance and expertise within the field of environmental management;
- To make sure our clients access economic freedom through sustainable development;
- To provide scientific based solutions that are realistic and of best practicable option;
- To bridge the economic gap and contribute to the country's GDP;
- To provide mining support through provision of occupational health and safety and other services
- To provide technical services in water, waste and sanitation services.
- To provide mobile occupational health and safety at the convenience of our clients and partnership with our clients

3. VISION

To promote sustainable development, to provide environmental services that are of quality while affordable to our clients. To promote environmental compliance while contributing to economic growth. To provide onsite Occupational Health and Safety at a place that is convenient to our clients. To give our clients solutions that add value to their operations and giving them a competitive edge. To eliminate the obstacle that is faced by small business when accessing funding for development.

4. MISSION STATEMENT

Our mission is to assist in protecting and conserving the surrounding environment for future generations by working close with our clients. We intend to provide the best possible service to our clients while encouraging environmental solutions in all aspects and maintaining a sound relationship based on mutual respect and good work ethic. To provide environmental expertise, occupational health and safety expertise, promote environmental law enforcement through working together with our communities, government sector and all relevant stakeholders

5. VALUES/APPROACH

PEARL OF GREAT PRICE ENVIRONMENTAL CONSULTING is committed to providing environmental services and occupational health services that will provide access to economic growth and safety at workplace through sustainable development and compliance with the law of the republic of South Africa. The **PEARL OF GREAT PRICE** company is:

- Client orientated environmental consulting firm
- Committed to its clients' needs
- Identifies minimum requirements that can provide access to economic growth
- Skilled with understanding of local regulatory processes and procedures
- Practical, innovative and efficient
- One stop shop delivery of quality products and services
- Source of information and guidance for its clients
- Client focus company
- Promoting projects that are in compliance with all the relevant legislation of the republic of South Africa
- Providing occupational health and safety compliant company

6. EXPERTISE: ENVIRONMENTAL SERVICES

Our services involve identifying projects that require authorizations, identification of environmental impacts that a particular project might have and advise the client on mitigation measures. Recognition of the social impacts and conducting public participation with the community meeting where we independently facilitate the views of the affected community. Whilst development is of great need in the growing South Africa, it is however imperative that both growth and development are sustainable both socially and economically. Socio-economic aspect includes improves quality of life environmental sustainability and environmental protection. The above services are

included when compiling the environmental basic assessment, scoping/Environmental impact assessments (EIA) and public participation process. These are undertaken in terms of:

- Government Notices 544, 545 and 546 (Listing Notices 1, 2 & 3) of the EIA Regulations, August 2010, under the National Environmental Management Act (Act No. 107 of 1998) ("NEMA"), as amended;
- Government Notice No. 718 (Category A & B) of the Waste Management Activities, July 2009, under the National Environmental Management: Waste Act (Act No. 59 of 2008) ("NEM: WA");
- National Water Act, 1998 (Act no.36 of 1998) for the application of water use licenses;
- Minerals and Petroleum Resources development Act;

The company also specialize in the following:

Compilation of Environmental Management Programmes(EMPr) including construction and Operational aspects for projects that do not fall under the listed activities requirement of Section 24 of NEMA 108 of 1998.

- Environmental Management of Construction Sites
- Environmental control, monitoring and auditing
- Develop environmental management plans

7. EXPERTISE: OCCUPATIONAL HEALTH AND SAFETY SERVICES

This section deals with providing support services that will ensure continuous improvement of the Mining operations, Manufacturing industries, Construction, Transport, agricultural sector and government sector through the provision of the following:

- Occupational Health and Safety Consultancy Services
- Conduct incident investigations on behalf of the client, analyse trends and make recommendations
- Development of safety plans and safety files
- Occupational Health Management Consultancy
- Development and Implementation of Occupational Health and Safety Management Systems
- Occupational Health and Safety compliance auditing
- Hazard Identification
- Risk Assessments and safe work procedures
- Environmental Auditing
- SHE compliance Audits inspections
- Nursing Services

Pearl of Great Price deliver all these services in line with the Amended Occupational Health and Safety Act: (Act no. 85 of 1998) and the National Health Act: Act no. 61 of 2003

Types of medicals

- Construction Regulation Medicals
- Working on Heights Medicals
- Operator Medicals
- Transport/PDP Medicals
- Food Handler and Farming Medicals
- Abattoir Medicals
- Manufacturing and Chemical Exposure Medicals
- Engineering Medicals
- Mining Medicals
- Executive Medicals

Core Services

On- site medicals

- Pre-Employment Medicals
- Periodical medicals
- Exit Medicals
- Lung functioning tests
- Audio Screening tests
- Vision screening tests (Snellen)
- Vision screening (keystone)
- Chest X-Rays
- Blood Tests
- Urine Tests
- Biological Monitoring

Secondary services

Health Testing

- Laboratory Blood Test
- Urine tests
- Multi Drug Tests & Cannabis Tests
- TB & HIV/ AIDS Tests
- Blood Sugar Tests
- Cholesterol Tests
- TB education
- HIV/Education

8. WAREHOUSING AND OTHER SUPPORT SERVICES FOR TRANSPORTATION

PEARL OF GREAT PRICE ENVIRONMENTAL CONSULTING provides a range of support services to Contractors, Mining Industry, Clinics, Hospitals and any other industry that requires the service provision that is in line with our company profile. The following are the services that are provided for as required.

- Personal Protective Equipment
- Drilling equipment
- Diesel, fuel and hydrocarbons
- Nursing services
- OHS services
- Chemical toilets

9. EXPERTISE: REMEDIATION ACTIVITIES AND OTHER WASTE MANAGEMENT ACTIVITIES

Waste Management services are conducted and provided in line with the National Environmental Management: Waste Act: (Act no. 59 of 2008), White Paper on integrated pollution and waste management for South Africa and Hazardous Substances Act (Act no. 5 of 1973).

The following are the services that are provided:

- Application for Landfill Site
- Waste removal services
- Development of waste management guidelines
- Development of Integrated Water and Waste Management Plan
- Application for storage of waste on site e.g in the mining and product making industries
- Application for the Storage of Hazardous substances and hazardous waste

10. MANAGEMENT TEAM

MISS ZAMASWAZI KHULU (CHIEF EXECUTIVE OFFICER/MEMBER) - BCOM ECONOMICS AND BUSINESS MANAGEMENT

Miss Khulu is the founder and CEO of the company and is involved in management and day-to-day running of the business. She is responsible for operational and financial decisions of the business. She is responsible for business management like liaising with clients, applying for projects, filling out tender documents, invoices and quotations. She handles the administration and finances of the company. She holds a Bachelor of Commerce in Business management and Economic, has experience in Supply Chain management, demand management and document writing methodology. She is the person that markets and manages the good economic status of the company and compliance with all registrations and legal status of the company. She also identifies new projects that are in line with Pearl of Great Price policies, values and criteria.

MRS KHULULIWE MATHENJWA (MANAGING DIRECTOR/MEMBER) – BSC CHEMISTRY AND GEOGRAPHIC SCIENCES AND ENVIRONMENTAL MANAGEMENT INSPECTOR

Mrs. Mathenjwa is responsible for the vision and strategic decisions of the business and all the activities of the company and serves as the Environmental Assessment Practitioner and managing director of Pearl of Great Price: Environmental Consulting. She has 17 years' experience in the field of environmental management. She holds a BSc degree from the University of KwaZulu Natal. She is an environmental management inspector with postgraduate certificates from UNISA. She has worked for Umgeni Water Board working for water projects. The majority of her experience is from the government sector, where she has worked for the Department of Water and Sanitation, Department of Economic Development, Tourism and Environmental Affairs. She has worked for the department at a middle line management as Assistant Director: Pollution and Waste, Capacity building and empowerment, Environmental Impact Assessment, Environmental Planning, Environmental monitoring and compliance enforcement. She has also acted as Deputy Director: Environmental Management Post for uMkhanyakude District. Currently she is Environmental Manager for three Coal mining companies in Amajuba district.

She has skills of evaluation of EIA report, EMPr, and issuing of environmental authorization and water use licenses. The experience with public participation was enormous as she was Assistant Director for capacity building and empowerment, which was environmental advisory services to all relevant stakeholders. She has a certificate as an auditor ISO 14001 and certification as an Environmental Impact Assessor from the University of Pretoria. She has worked with different stakeholders Zululand District Municipality and its local Municipalities, UMkhanyakude District and its local municipalities and uThungulu districts and its local municipalities. She has worked with industries as stakeholder in Richards Bay Transnet, Richards Bay Minerals, Forskor and Somkhelele Mines. The experience gained over the years is sufficient and credible for her to practice as an Environmental Assessment Practitioner

**MR NKOSINATHI KHULU (OCCUPATIONAL HEALTH AND SAFETY MANAGER/MEMBER)
– DIPLOMA IN GENERAL NURSING AND POSTGRADUATE DIPLOMA IN OCCUPATIONAL
HEALTH NURSING SCIENCE**

Mr. Khulu is responsible for **PEARL OF GREAT PRICE HOLDINGS** Occupational Health and Safety Consultancy Services. The company operates on a fully integrated Safety, Health, Environment and Quality management system and implements nationally accepted Occupational Health and Safety standards and procedures. Mr. Khulu is responsible to seek better solutions and minimize risk in any of operations undertaken with his strong legal knowledge regarding the Occupational Health and Safety Act (No 83 of 1993) together with implementation and auditing experience he will ensure quality legal compliance audits and OHS Management System Reviews.

Mr. Khulu has 6 years' experience working as a staff nurse at Madadeni Provincial Hospital, 8 years' experience as a professional nurse at Amajuba memorial hospital and is currently working as Occupational Health Nurse at SABC clinic in Polokwane. Mr. Khulu is very competent in his expertise. He is currently the Occupational Health Practitioner for Care Net Consultants.

The following are the post graduate courses He has done to be competent in his field.

- Contraception and fertility planning
- Audiometric techniques
- The CHAPS Practical & Theoretical Voluntary
- Medical Male Circumcision (VMMC) Training Programme
- Vision Screening for Industry
- ECG & Pharmacology Course
- Course in Dispensing
- Health Assessment Skills and Clinical Physical Examination
- Basic Life Support for Healthcare Providers
- First Aid Level 3
- Guidelines CPR ECC: American Heart Association, Airway Management Course
- The pulse practice
- Spirometry

10. OUR CLIENTS

- Parastatals e.g. Eskom and Transnet
- Government Departments
- Manufacturing industries
- Non - Government Organizations
- Consulting Civil Engineers
- Construction Companies
- Property Developers
- Project Managers
- Transport Industries
- Agriculture and food handling industries
- Private Companies
- Mining industries
- Developers
- Business entities
- Industries
- Other consulting companies
- Non-Government sector etc.

11. COMPANY DETAILS

COMPANY NAME	PEARL OF GREAT PRICE HOLDINGS (PTY) LTD
TRADING AS	PEARL OF GREAT PRICE: ENVIRONMENTAL CONSULTANTS
COMPANY REGISTRATION	2018/044273/07
MEMBER 1	ZAMASWAZI KHULU (55% SHAREHOLDER)
MEMBER 2	KHULULIWE MATHENJWA (45% SHAREHOLDER)
CONTACT NUMBER	081 767 8886
EMAIL ADDRESS	zamaswazikhulu@gmail.com